

Radunanza Generela 2013



Mardi, 2 avrigl 2013, restorant Klarer, Zuoz

1. Salüd

Peider Gotsch salüda a tuot ils comembers ed evra la radunanza generela 2013 a las 19⁰⁰ H.

A nu sun giavüschos müdamaints tar las tractandas.

S-chüsos: Giovannin Nuotclà

2. Tscherna da duos scrutinadurs

Cun que cha sun bè pochs comembers nu vegnan druvos scrutinadurs.

3. Protocol da la radunanza generela 2012

Il protocol as pudaiva guardar ouravaunt sün nossa pagina d'internet.

A nu do ingünas remarchas dal protocol 2012.

Il protocol vegn aczepto unanimamain.

4. Rapport annuel dal president

Scu adüna avains cumanzo nossa stagiun da tir cumainzamaint dad avrigl. Ün per dis aunz avaiva lö la radunanza generela, inua cha vains pudieu bivgnainter a Marina Hosang scu actuara in nossa suprastanza.

Nus avains piglia part a nos tirs üsits scu al tir individuel e maistraunza da gruppa a San Murezzan, il tir champester a San Murezzan, ed oters.

Inpü sun gnies mnos tres nos tirs interns scu la pardunaunza, il match cunter Puntraschina, e nouv eir ün tir d'amizizcha cun S-chanf.

La Pardunaunza ho guadagno Daniel Steger tal püt tradiziunel e Remo Casty tal püt premi. Tal match cunter Puntraschina nu's sto crai pü manzuner cha Puntraschina ho gia darcho guadagno...

Natürelmaing avains piglio part al tir chantunel a Rona!

Resultats ots sun da Marco Crameri chi ho raggiunt la 6evla piazza scu "Schützenkönig" illa categoria D e la 12evla piazza da Remo Casty tal "Kranzstich" illa categoria A.

Cun la societad avains raggiunt aint illa maistraunza da secziun grischunaisa dal tir chantunel la 22evla piazza da la categoria 2 e avains clappo ün bel premi.

Quist an essans dafatta stos eir ad ün seguond tir chantunel, cun que cha eira fingia bod üsit da cumbiner que cun ün per bels dis in cumpagnia. Uschè essans stos da l'otra vart da la Svizra, a Neuchâtel.

Lo haun ils üns dafatta fat aucha las megltras plazzas: Marco Crameri la prüma piazza tal püt "Nachdoppel" e la nouv evla piazza tal püt "Georges de l'Aureuse" illa categoria D! Mario Feuerstein ho raggiunt la 15evla piazza tal püt seria illa categoria A. Nos tregant giuvenil, Gian Luca Palmisano es rivo da fer la segunda piazza tal püt "Festsiegerkonkurrenz" !

La fin da settember avaiva lö la premiera da quel film chid es gnia fat üna granda part a Zuoz: Der Teufel von Mailand. Insembel cun las gimnastas e la gruppa da gö avains surpiglio la restauraziun da quist evenimaint.

Displaschaivelmaing sun bgers bè sto a guarder il film e nu vulaivan propcha manger grad e fer festa. Il guadagn es sto minimel, pero avains pudieu musser, cha eir la societad da tregants as metta aint pel cumün.

L'ingrazchamaint dal cumün da Zuoz eira eir fich positiv.

Glivro nossa stagiun da tir avains scu adüna cun üna buna tschaina e scumpartiziun da premis. Quista vouta eirans sü al restorant Alvra a La Punt, inua cha vains pudieu giodair nossa cumpagnia. Il program annuel 2012 ho guadago Marco Crameri aunz Mario Feuerstein e Daniel Steger sün la terza piazza.

Quist rapport annuel es mieu ultim scu president. Avaunt precis desch ans dhe pudieu surpigliar quista carica auncha illa societad da tregants Zuoz da Marco Bassin. In quel temp es capito ter bger: 2005 avains scholt las duos societeds da tregants Zuoz e La Punt a favur da la nouva societad da tregants Engiadina. 2008 avains renovo nos restorant a Zuoz ed eir 2008 es gnieu fusiuno il district da tir X (Bregalia), XI (Engiadin'Ota) e XII (Puschlev) al nouv district Bernina. 2009 avains mis insembel ils duos cuors da giuvens tregants da Zuoz e da Schanf insembel, cun que chal nummer dad interessents es ieu ferm inavous. 2010 es gnieu serro l'implaunt a La Punt. Daspö lung temp essans landervi pervi dad ün implaunt regiunel a S-chanf, ils tregants da S-chanf tiran finga eir daspö il 2011 sün nos implaunt a Zuoz.

Ils motifs da schmetter scu president nu haun da che fer cul trer inguotta. Eau restaro inavaunt tregant e comember da la societad e sun gugent pront da güder tschertas lavuors. A me mauncha simplamaing il temp da fer las lavuors uschè precis scu cha pretend da me sves.

Eau vuless ingrazcher a mieus camerads da la supranza, chi'm haun adüna sustgieu fich bain. Ün grazcha fich eir a tuot ils commembers ed oters agüdaints, chi eiran cö cur cha eira da fer üna u l'otra lavur. Eir la buna cumagnia am ho adüna fat grand plaschair.

Eau sun perschas cha que funcziuna inavaunt istess bain cun la granda motivaziun cha vegn musso da tuots.

Grazcha per tuot!

Vos president, Peider Gotsch

Il protocol vegn aczepto unanimamain.

5. Rapport dal chaschier e dals revisuors da quint

Mario Feuerstein declera il quint da gestiun e la bilauntscha 2012:



Quint da gestiun 2012

	Quint da gestiun 2012		Quint da gestiun 2011		Differenza
püt Engiadina	2'747.00		2'479.00		
	-1'176.00	1'571.00	-1'062.00	1'417.00	154.00
Pardunaunza Zuoz	2'497.00		3'213.00		
	-1'303.30	1'193.70	-1'800.60	1'412.40	-218.70
oters Püts interns (püts annuels, s-cheppas, ...)	195.00		195.00		
	-330.00	-135.00	-460.00	-265.00	130.00
Püts externs (Feld-, GR-, KK-, Sektionsstich, ...)	837.00		1'139.00		
	-777.00	60.00	-990.00	149.00	-89.00
tirs utro (ESF, KSF, GM, oters tirs da gruppa, ...)	200.00		260.00		
	-2'804.00	-2'604.00	-2'075.00	-1'815.00	-789.00
munizium	6'857.90		13'037.20		
	-6'113.45	744.45	-10'410.05	2'627.15	-1'882.70
giuven tregants	0.00		0.00		
	0.00	-	0.00	-	0.00
cuntribuziuns	1'659.20		1'845.00		
	-1'018.00	641.20	-995.00	850.00	-208.80
lizenzchas	500.00		450.00		
	-426.00	74.00	-276.00	174.00	-100.00
restorant	4'803.05		4'341.95		
	-4'124.15	678.90	-3'968.40	373.55	305.35
"Der Teufel von Mailand"	3'453.70		0.00		
	-3'072.70	381.00	0.00	-	381.00
differentas entredgias	155.00		0.00		
donaziuns e bunamauns	76.60		184.00		
fits implaunt da tir	705.90		653.90		
differentas sortidas	-1'456.40		-1'662.75		
mantegniment implaunt da tir	-37.50		-2'309.40		
telefon, porto, material da büro	-366.30		0.00		
La Punt: cuntribuziun extraordinaria	0.00		0.00		
sgüraunzas	-1'180.65	-2'103.35	-1'251.85	-4'386.10	2'282.75
fits e spaisas da banca	50.30		52.35		
	-47.85	2.45	-27.65	24.70	-22.25
amortisaziuns e perdita debiturs	-3.00		0.00		-3.00
summa entredgias	24'737.65		27'850.40		
summa sortidas	-24'236.30	501.35	-27'288.70	561.70	-60.35
Remarchas:	GUADAGN	501.35	GUADAGN	561.70	

oters tirs interns: druvo damain cartas da craunzs e pü pitschen import per bons dal program annuel

tirs utro: duos tirs chantunels (GR e NE)

munizium: pajo inavos CHF 1'036.25 als 12 tregants chi haun trat l'an passo il progr. annuel (decisiun GV 2012)

munizium: la munizium da S-chanf nun ais pü resguardada in nos rendaint

cuntribuziuns annueles: 2012: 38 (2011: 37; 2010: 41; 2009: 48; 2008: 43; 2007: 44; 2006: 42)

cuntribuziuns annueles: main contribuziuns OP e TCH, dapü contribuziuns al SSV

donaziuns: Camichel Lotar CHF 50.00

fits implaunts: SdT S-chanf: 0.10 / tun + CHF 100 Spital Samedan



Bilauntscha pels 31-12-2012

Activas

	Quint da gestiun 2012	Quint da gestiun 2011	Differenza
munaida			
cassa	26.90	871.35	
banca RF	34'266.30	36'925.10	
banca RF "restorant"	0.00	0.00	
depot clef seletta	50.00 34'343.20	50.00 37'846.45	-3'503.25
dabuns			
debituors	2'041.40	772.80	
dabuns taglia antizipeda	24.00 2'065.40	19.80 792.60	1'272.80
inventar			
muniziun	6'794.55	4'900.00	
cartas da craunz	420.00	380.00	
giaccas da la societad	1.00	1.00	
mobiglias ed indrizs da büro	1.00	1.00	
mobiglias ed indrizs da restorant	1.00 7'217.55	1.00 5'283.00	1'934.55
differentas			
activas transitoricas	250.00	544.85	-294.85
summa activas	43'876.15	44'466.90	-590.75

Passivas

bons			
bons prog. annuel ed engiadina	-1'506.00	-1'522.00	16.00
differentas			
passivas transitoricas	-773.90	-1'850.00	1'076.10
summa passivas	-2'279.90	-3'372.00	1'092.10

Faculted

faculted pels 31.12.2011	41'094.90
augmaint da la faculted	501.35
faculted pels 31.12.2012	41'596.25

Remarchas:

Ün grand grazcha fich a Mario per sia lavur!

Gian Reto Sonder scu revisuor fo la proposta da der dis-charg als organs respunsabels e dad aczepter il rendaquint 2014:

RAPPORT DALS REVISUORS DA QUINT

per l'an da gestiun 2012 a maun da la radunanza generela dals 02 avrigl 2013.

Stimedas damas
Stimos signuors

Il suotsegnos revisuors haun repasso il rendaquint 2012 e suottamettan il seguaint rapport:

- Ils saldos da chascha e dals contos da banca correspuondan
- Ils allegats correspuondan e sun avaunt maun

La contabilited vains chatto in bun uorden e fains la proposta a la radunanza generela da der dis-charg als organs respunsabels in acceptand il rendaquint 2012 ed ingrazchand al chaschier per la lavur prestada.

Zuoz, 1. avrigl 2013

Il rendaquint 2012 e la revisiun vegnan aczeptos unanimamain.

6. Cuntribuziun annuela 2014 / predschs muniziun 2014

Cun que cha nossa cassa guarda our bain, vulessans lascher ils imports scu ils ans passos.

contribuziun annuela	Fr. 25.--
(per giuvens tregants, giuvenils e veterans)	Fr. --.--
lizenzcha	Fr. 25.--
muniziun	Fr. -.50
(giuvens tregants)	Fr. -.40

Tuot quels chi tiran afin il program annuel clappan inavous Fr. -.10 per tun.

La cuntribuziun els predschs da muniziun pel 2014 vegnan aczeptos unanimamain.

7. Program annuel 2013

Eir quist an tira la societad da tregants S-chanf a Zuoz. Adüna in marcaldi saira a partir da las 18³⁰ h, a nus sto scu adüna liber dad ir a trer quella saira.

La mappa cotschna preparains per la prüma saira da tir.

Per plaschair guarder da tegner aint ils termins e bütter aint ils fögls implieus our complett (allmain nom e suotascriptiun) a temp.

Tirs cha nu vais avaunt da trer, as po bütter aint il fögl vöd eir gia uossa. Quels fögls sun marcos e nus savains da chi cha rivan.

Preparer l'implaunt

Quista sanda preparains l'implaunt. Nus essans grazchs, scha füss anucha ün u l'oter chi gniss a güder.

Tiro d'apertura a San Carlo

In sanda, ils 13 avrigl avess lö il tira d'apertura a San Carlo.

Scha qualchün avess interess da piglier part, s'annunzcher tar Peider.

Matchcup

Interessents dal Matchcup as dessan per plaschair s'annunzcher zieva la radunanza tar Peider.

Tir champester

Quel ho lö quist an darcho a Zuoz.

Nus druvarons darcho glied chi güda, saja que per metter sü la tenda, agüd aint il restorant o eir in büro.

Nus rivains a temp a dumander chi cha vess temp.

Tir obligatoric

Il istess ram scu l'an passo.

Match Puntraschina - Engiadina

In mardi ils 13 avuost ho lö nos tir e la tschaina cumünaivla cun Puntraschina, quist an darcho a Puntraschina.

Pardunaunza

La Pardunaunza ho lö als 13 lügl.

Il ram saro darcho scu l'an passo, detagls vegnan auncha fats gio traunter las suprastanzas.

Match d'amizizcha Engiadina – S-chanf

Scu l'an passo vulessans fer darcho ün pitschen evenimaint insembel cun S-chanf. Quel ho lö in venderdi, 9 avuost 2012 cun üna tschaina cumünaivla zieva il trer.

Feldstich

Quel cuosta nouv Fr. 19.-, pero as po trer cun quel import duos voutas il püt. Il resultat pü ot quinta.

Secziun

Il programm es gnieu scurznieu sün 10 tuns (A10).

Per pigler part druversans darcho 14 tregants! A füss bel scha uschè bgers comembers lizenzhos scu pussibel pudessan trer quist tir.

Match Circuitel (Bezirksmatch)

Que do la pussibilted da trer tuot in vainter (Liegendmatch) o in vainter ed in schnuoglias (2-Stellungs-Match).

Ils tregants chi haun trat el l'an passo chattan el in la mappa cotschna da tir, sch'ün oter es interesse, as dessan annunzcher.

Cuors da giuvens tregants

Il cuors ho eir quist an lö a Zuoz e vegn mno tres dad Ernst Parli.

Tir chantunel Jura

Venderdi, 5 lügl 2013 e sanda, 6 lügl 2013 a Bure – Mormont essans annunzchos.

L'hotel es fingia reservo ouravaunt, ün programm dadourvart il trer vain eir auncha organiso.

S'annunzcho as haun: Peter Plebani, Bruno Brasi, Peider Gotsch, Martina Stübi, Remo Casty, Mario Feuerstein, Marco Crameri, Marina Hosang, Daniel Steger, Gian Peider Lony, Gian Luca Palmisano e Jürg Sprecher.

8. Müdamaint dal programm annuel

Nos programm annuel nun es pront pels veterans (e giuvens tregants) chi tiran cun ün otra arma scu quella dal militer. Daspö quist an avains nempè duos veterans inpü in nossa societad: Remo Casty e Peter Plebani! Inpü as haun müdo tscherts programms da tir.

Mario Feuerstein muossa sü las differenzas (vair las tabellas la fin da quist protocol).

Ils müdamaints al program annuel vegnan aczeptos unanimamain.

9. Tschernas

Scu fingia annunzcho ouravaunt, schmetta Peider Gotsch scu president da la societad da tregants Engiadina. Peider es inpü sto dal 1997 fin 2006 eir in funcziun scu mneder da giuvens tregants.

Ils oters commembers da la suprastanza as mettan aunch' üna vouta a dispusiziun per duos ans.

Nus dru vessans ün nouv president!

Marco Crameri as metta a dispusiziun per quista carica. Tschertas lavuors vegnan spartieus sü sün oters commembers da la suprastanza.

Uschè cha dru vessans ün nouv prüm maister tregant.

Inpü avessans la pussibilitad da piglier sün üna persuna imnpü in suprastanza scu assesur.

Per quistas duos caricas as mettessan Daniel Steger e Bruno Brasi a dispusiziun.

*Tuot ils comembers vegnan tschernieus cun grand aplaus in lur carica.
Al president vegl, Peider Gotsch vegn ingrazcho per sia lavir prasteda.*

10. Undrentschas

Nus avains duos comembers chi sun fingia daspö uschè bgers ans commembers da nossa societad, cha nu rivains nauncha pü da garder zieva quaunt lönch. Ün da quels duos ho fingia avaunt ün per ans schmis da trer, il seguond ho per quist an eir mis a lö sieu carabiner.

Nus discurrens da Florio Tognoni e Giovannin Nuotclà.

Quista prestaziun dad esser uschè lönch commember vulessans onurer e piglier sü ad els duos scu commembers d'onur da la societad da tregants Engiadina!

Displaschaivelmaing es Giovannin a l'ospidel e nu riva da piglier part hoz saira. Nus al vains lascho trametter salüds e bun megldramaint da tuot ils commembers da la societad.

11. Varia

Mneder dal restorant a Zuoz

Fadri Raschèr as ho mis a dispusiziun da mner eir quist an il restorant da nossa chamanna da tir a Zuoz. El es eir intuorn in marculdi cur cha S-chanf tira.

Grazcha fich a Fadri per sieu colavuraziun.

Implaunt da tir a S-chanf

Nus nun avains eir quist an ingünas noviteds...

Finischun

Peider Gotsch surdescha per glivrer la radunanza offiziel a Marco Crameri chi serra la radunzana generela 2013.

Societed da tregants Engiadina

Programm annuel

		Obligatoric	Tir Cham- pester	Pardun. püt tradi.	Pardun. püt craunz	Engiadina	S-cheppas	püt dal cercul	Püt GR	Summas
program		5 EF A5 5 EF B4 2+3+5 SF B4	6 EF B4 3+3+6 SF B4	8 EF A10	10 EF A100	10 EF A100	10 EF A100	10 EF A10	6 EF A10	
maximum		85	72	80	100	100	100	100	60	697
nr. da tuns		20	18	8	10	10	10	10	6	92
remarchas		be armas da militer!	be armas da militer!		2 megltras passas	megldra passa		megldra da las prümas 2 passas	megldra passa	
supplemaint d'arma	B	2.0	2.0	4.0	5.0	4.0	5.0	5.0	3.0	30.0
	C/D	-	-	2.5	3.0	2.5	3.0	3.0	2.0	16.0
supplemaint d'eted	V/J	1.0	1.0	1.0	1.5	1.5	1.5	1.5	1.0	10.0
	SV/JJ	2.0	2.0	2.0	3.0	3.0	3.0	3.0	2.0	20.0

Remarchas:

1. J und JJ u in piazza dal püt dal cercul e dal püt GR
64% dal JS-Hauptschiessen + JS-Wettschiessen
(10 EF&5SF A10 und 6 EF & 4SF A10 - 64% da 250p = 160p)
2. Ils supplemaints d'eted vegnan quintos tiers il supplemaint d'arma
3. Ils supplemaints vegnan quintos tiers tal resultat trat da mincha püt,
a nun ais pero pussibel d'avair ün resultat pü ot scu'l maximum

approvo in la radunanza generela dals 2 avrigl 2013

Cunguel glistas rangs dals ultims 4 ans

2012			OP85			TCH72			Pard tr80			Pard cr100			Eng100			S-ch100			KK100			GR60			TotAlt	supl	TotNeu	Rneu	Ralt
Crameri Marco	C/D	E	81	0	81	70	0	70	74	2.5	76.5	92.2	3	95.2	93.0	2.5	95.5	89.3	3	92.3	96	3	99.0	60	2	60.0	655.5	16.0	669.5	1	1
Feuerstein Mario	A	E	79	0	79	66	0	66	73	0	73.0	95.0	0	95.0	93.1	0	93.1	89.2	0	89.2	95	0	95.0	57	0	57.0	647.3	-	647.3	2	2
Steger Daniel	A	E	72	0	72	58	0	58	76	0	76.0	94.4	0	94.4	95.2	0	95.2	88.4	0	88.4	94	0	94.0	56	0	56.0	634.0	-	634.0	7	3
Brasi Bruno	A	E	75	0	75	63	0	63	70	0	70.0	95.6	0	95.6	90.7	0	90.7	88.6	0	88.6	94	0	94.0	58	0	58.0	634.9	-	634.9	6	4
Rüegg Gian Carlo	C/D	E	77	0	77	68	0	68	68	2.5	70.5	86.0	3	89.0	92.4	2.5	94.9	86.0	3	89.0	90	3	93.0	55	2	57.0	622.4	16.0	638.4	5	5
Sonder Gian Reto	C/D	E	82	0	82	68	0	68	73	2.5	75.5	92.6	3	95.6	83.1	2.5	85.6	81.5	3	84.5	90	3	93.0	53	2	55.0	623.2	16.0	639.2	4	6
Casty Remo	A	E	73	0	73	59	0	59	73	0	73.0	94.3	0	94.3	93.5	0	93.5	85.1	0	85.1	94	0	94.0	56	0	56.0	627.9	-	627.9	8	7
Palmisano Gian Luca	C/D	SV/JJ	73	2	75	65	2	67	69	4.5	73.5	88.9	6	94.9	88.9	5.5	94.4	79.9	6	85.9	92	6	98.0	54	4	58.0	610.7	36.0	646.7	3	8
Hosang Marina	C/D	E	75	0	75	59	0	59	67	2.5	69.5	84.2	3	87.2	88.7	2.5	91.2	84.8	3	87.8	93	3	96.0	52	2	54.0	603.7	16.0	619.7	10	9
Gotsch Peider	B	E	71	2	73	65	2	67	65	4	69.0	79.5	5	84.5	86.4	4	90.4	83.1	5	88.1	89	5	94.0	55	3	58.0	594.0	30.0	624.0	9	10
Stübi Martina	C/D	E	71	0	71	51	0	51	67	2.5	69.5	80.6	3	83.6	81.8	2.5	84.3	72.4	3	75.4	79	3	82.0	48	2	50.0	550.8	16.0	566.8	11	11
Nuotclà Giovannin	C/D	SV/JJ	64	2	66	40	2	42	60	4.5	64.5	81.2	6	87.2	70.5	5.5	76.0	73.3	6	79.3	93	6	99.0	42	4	46.0	524.0	36.0	560.0	10	12

2011			OP85			TCH72			Pard tr80			Pard cr100			Eng100			S-ch100			KK100			GR60			TotAlt	supl	TotNeu	Rneu	Ralt
Crameri Marco	C/D	E	80	0	80	68	0	68	69	2.5	71.5	95.7	3	98.7	91.0	2.5	93.5	91.1	3	94.1	94	3	97.0	56	2	58.0	644.8	16.0	660.8	1	1
Sonder Gian Reto	C/D	E	83	0	83	68	0	68	74	2.5	76.5	91.4	3	94.4	87.4	2.5	89.9	85.5	3	88.5	91	3	94.0	58	2	60.0	638.3	16.0	654.3	3	2
Rüegg Gian Carlo	C/D	E	78	0	78	67	0	67	70	2.5	72.5	90.9	3	93.9	92.7	2.5	95.2	89.6	3	92.6	94	3	97.0	58	2	60.0	640.2	16.0	656.2	2	3
Steger Daniel	A	E	81	0	81	63	0	63	78	0	78.0	94.4	0	94.4	94.5	0	94.5	87.2	0	87.2	94	0	94.0	57	0	57.0	649.1	-	649.1	4	4
Feuerstein Mario	A	E	83	0	83	62	0	62	76	0	76.0	93.9	0	93.9	95.0	0	95.0	81.3	0	81.3	95	0	95.0	58	0	58.0	644.2	-	644.2	5	5
Jäger Jolanda	C/D	E	77	0	77	65	0	65	75	2.5	77.5	87.7	3	90.7	89.3	2.5	91.8	83.6	3	86.6	92	3	95.0	57	2	59.0	626.6	16.0	642.6	6	6
Casty Remo	A	E	75	0	75	58	0	58	72	0	72.0	94.9	0	94.9	93.4	0	93.4	71.1	0	71.1	96	0	96.0	56	0	56.0	616.4	-	616.4	7	7
Brasi Bruno	A	E	71	0	71	62	0	62	70	0	70.0	91.7	0	91.7	90.4	0	90.4	84.5	0	84.5	87	0	87.0	55	0	55.0	611.6	-	611.6	8	8
Hosang Marina	C/D	E	75	0	75	63	0	63	65	2.5	67.5	89.3	3	92.3	86.7	2.5	89.2	76.8	3	79.8	89	3	92.0	42	2	44.0	586.8	16.0	602.8	9	9
Nuotclà Giovannin	C/D	SV/JJ	74	2	76	53	2	55	65	4.5	69.5	78.5	6	84.5	84.1	5.5	89.6	75.8	6	81.8	75	6	81.0	51	4	55.0	556.4	36.0	592.4	11	10
Stübi Martina	C/D	E	77	0	77	58	0	58	68	2.5	70.5	80.6	3	83.6	79.1	2.5	81.6	84.0	3	87.0	88	3	91.0	48	2	50.0	582.7	16.0	598.7	10	11

2010			OP85			TCH72			Pard tr80			Pard cr100			Eng100			S-ch100			KK100			GR60			TotAlt	supl	TotNeu	Rneu	Ralt
Steger Daniel	A	E	71	0	71	64	0	64	78	0	78.0	95.8	0	95.8	94.0	0	94.0	88.4	0	88.4	96	0	96.0	58	0	58.0	645.2	-	645.2	4	1
Feuerstein Mario	A	E	81	0	81	64	0	64	76	0	76.0	94.0	0	94.0	93.0	0	93.0	91.6	0	91.6	95	0	95.0	57	0	57.0	651.6	-	651.6	2	2
Sonder Gian Reto	C/D	E	83	0	83	69	0	69	73	2.5	75.5	93.2	3	96.2	88.5	2.5	91.0	83.4	3	86.4	94	3	97.0	56	2	58.0	640.1	16.0	656.1	1	3
Rüegg Gian Carlo	C/D	E	77	0	77	67	0	67	72	2.5	74.5	92.1	3	95.1	92.1	2.5	94.6	85.6	3	88.6	91	3	94.0	54	2	56.0	630.8	16.0	646.8	3	4
Casty Remo	A	E	73	0	73	64	0	64	75	0	75.0	93.1	0	93.1	93.7	0	93.7	84.1	0	84.1	94	0	94.0	56	0	56.0	632.9	-	632.9	5	5
Brasi Bruno	A	E	76	0	76	65	0	65	72	0	72.0	92.9	0	92.9	91.4	0	91.4	80.7	0	80.7	93	0	93.0	54	0	54.0	625.0	-	625.0	7	6
Gotsch Peider	B	E	65	2	67	65	2	67	67	4	71.0	85.2	5	90.2	83.9	4	87.9	77.8	5	82.8	93	5	98.0	54	3	57.0	590.9	30.0	620.9	8	7
Crameri Marco	C/D	E	81	0	81	53	0	53	71	2.5	73.5	86.9	3	89.9	94.0	2.5	96.5	78.7	3	81.7	94	3	97.0	52	2	54.0	610.6	16.0	626.6	6	8
Nuotclà Giovannin	C/D	SV/JJ	70	2	72	54	2	56	66	4.5	70.5	81.8	6	87.8	86.9	5.5	92.4	80.5	6	86.5	88	6	94.0	50	4	54.0	577.2	36.0	613.2	9	9
Palmisano Gianluca	C/D	SV/JJ	71	2	73	53	2	55	62	4.5	66.5	80.5	6	86.5	84.9	5.5	90.4	71.1	6	77.1	82	6	88.0	50	4	54.0	554.5	36.0	590.5	10	10
Hosang Marina	C/D	E	74	0	74	58	0	58	63	2.5	65.5	81.1	3	84.1	86.7	2.5	89.2	77.6	3	80.6	74	3	77.0	42	2	44.0	556.4	16.0	572.4	11	11
Stübi Martina	C/D	E	78	0	78	57	0	57	56	2.5	58.5	78.4	3	81.4	84.8	2.5	87.3	68.6	3	71.6	65	3	68.0	43	2	45.0	530.8	16.0	546.8	12	12

2009			OP			85	TCH			72	Pard tr			80	Pard cr			100	Eng			100	S-ch			100	KK			100	GR			60	TotAlt	supl	TotNeu	Rneu	Ralt
Crameri Marco	C/D	E	83	0	83	65	0	65	73	2.5	75.5	93.3	3	96.3	92.9	2.5	95.4	89.4	3	92.4	94	3	97.0	56	2	58.0	646.6	16.0	662.6	1	1								
Feuerstein Mario	A	E	77	0	77	68	0	68	75	0	75.0	94.3	0	94.3	93.8	0	93.8	91.3	0	91.3	95	0	95.0	58	0	58.0	652.4	-	652.4	3	2								
Rüegg Gian Carlo	C/D	E	78	0	78	68	0	68	74	2.5	76.5	94.8	3	97.8	91.1	2.5	93.6	85.2	3	88.2	92	3	95.0	56	2	58.0	639.1	16.0	655.1	2	3								
Sonder Gian Reto	C/D	E	76	0	76	64	0	64	77	2.5	79.5	90.2	3	93.2	85.6	2.5	88.1	86.5	3	89.5	90	3	93.0	57	2	59.0	626.3	16.0	642.3	5	4								
Jäger Gion Otto	A	E	83	0	83	65	0	65	79	0	79.0	91.0	0	91.0	91.9	0	91.9	87.5	0	87.5	94	0	94.0	57	0	57.0	648.4	-	648.4	4	5								
Steger Daniel	A	E	77	0	77	60	0	60	77	0	77.0	91.5	0	91.5	92.4	0	92.4	82.8	0	82.8	91	0	91.0	58	0	58.0	629.7	-	629.7	7	6								
Casty Remo	A	E	71	0	71	59	0	59	76	0	76.0	93.7	0	93.7	94.8	0	94.8	81.8	0	81.8	92	0	92.0	56	0	56.0	624.3	-	624.3	9	7								
Sprecher Jürg	C/D	V/J	80	1	81	66	1	67	68	3.5	71.5	83.5	4.5	88.0	88.8	4	92.8	83.3	4.5	87.8	92	4.5	96.5	54	3	57.0	615.6	26.0	641.6	6	8								
Gotsch Peider	B	E	75	2	77	63	2	65	68	4	72.0	83.1	5	88.1	86.5	4	90.5	79.6	5	84.6	90	5	95.0	53	3	56.0	598.2	30.0	628.2	8	9								
Brasi Bruno	A	E	77	0	77	64	0	64	66	0	66.0	90.4	0	90.4	90.2	0	90.2	87.7	0	87.7	92	0	92.0	54	0	54.0	621.3	-	621.3	11	10								
Plebani Peter	C/D	E	78	0	78	63	0	63	72	2.5	74.5	84.3	3	87.3	89.1	2.5	91.6	80.2	3	83.2	92	3	95.0	54	2	56.0	612.6	16.0	628.6	10	11								
Nuotclà Giovannin	C/D	SV/JJ	76	2	78	53	2	55	62	4.5	66.5	82.2	6	88.2	84.8	5.5	90.3	79.2	6	85.2	81	6	87.0	50	4	54.0	568.2	36.0	604.2	12	12								

Societad da tregants Engiadina

Programm annuel

	Obligatoric	Tir Cham- pester	Pardun. püt tradi.	Pardun. püt craunz	Engiadina	S-cheppas	püt dal circuit	Püt GR	Summas	code
program	5 EF A5 5 EF B4 2+3+5 SF B4	6 EF B4 3+3+6 SF B4	8 EF A10	10 EF A100	10 EF A100	10 EF A100	10 EF A10	6 EF A10		
maximum	85	72	80	100	100	100	100	60	697	
nr. da tuns	20	18	8	10	10	10	10	6	92	
remarchas	be armas da militer!	be armas da militer!		2 megltras passas	megldra passa		megldra da las prūmas 2 passas	megldra passa		
A	E lim		72	88	88	88	90	54	480	AElim
	max								-	AEmax
	supl								-	AEsupl
	V/J lim		70.5	86	86	86	88	53	469.5	AVlim
	max		1.5	2	2	2	2	1	10.5	AVmax
	supl		0.16	0.14	0.14	0.14	0.17	0.14	0.89	AVsupl
	SV/JJ lim		69	84	84	84	86	52	459	ASlim
	max		3	4	4	4	4	2	21	ASmax
	supl		0.27	0.25	0.25	0.25	0.29	0.25	1.56	ASsupl
B	E lim	72	60	66	79	79	81	51	567	BElim
	max	2	2	6	9	9	9	3	49	BEmax
	supl	0.15	0.17	0.43	0.43	0.43	0.47	0.33	2.84	BEsupl
	V/J lim	70	58	64.5	77	77	77	79	50	BVlim
	max	4	4	7.5	11	11	11	4	63.5	BVmax
	supl	0.27	0.29	0.48	0.48	0.48	0.52	0.4	3.4	BVsupl
	SV/JJ lim	69	56	63.5	76	76	76	78	49	BSlim
	max	5	6	8.5	12	12	12	5	72.5	BSmax
	supl	0.31	0.38	0.52	0.5	0.5	0.55	0.45	3.71	BSsupl
C/D	E lim	74	62	68	83	83	83	84	52	CElim
	max			4	5	5	5	6	27	CEmax
	supl			0.33	0.29	0.29	0.29	0.38	1.83	CEsupl
	V/J lim	72	60	66.5	81	81	81	82	51	CVlim
	max	2	2	5.5	7	7	7	8	41.5	CVmax
	supl	0.15	0.17	0.41	0.37	0.37	0.37	0.44	2.61	CVsupl
	SV/JJ lim	71	58	65.5	80	80	80	81	50	CSlim
	max	3	4	6.5	8	8	8	9	50.5	CSmax
	supl	0.21	0.29	0.45	0.4	0.4	0.4	0.47	3.02	CSsupl

las limitas as basan sùls
tirs chantunels actuels

fuormla pel suplemaint:
supl_max / (res_max - lim)

ils resultats vegnan rundos **insü**
sün üna plazza ziev'il comma

Remarcha: il suplemaint vain multiplocho cun la differenza traunter resultat maximel +1 e'l resultat effektiv, ais pero maximel il suplemaint maximel

p.ex: püt dal circuit

cat C E

resultat 92

suplemaint = (100-92)*0.38= **3.04 = 3.1**

do ün resultat da 95.1

Engiadina

cat C V

resultat 88

suplemaint = (100-88)*0.37= **4.44 = 4.5**

do ün resultat da 92.5

J und JJ u in plazza dal püt dal circuit e dal püt GR 64% dal JS-Hauptschiessen + JS-Wettschiessen (10 EF&5SF A10 und 6 EF & 4SF A10 - 64% da 250p = 160p)

approvo in la radunanza generela dals 2 avrigl 2013

Survista da tuot ils programs

OP		Limite cat D: 74		correctura da la differenza 1									
resultat	AV	AS	BE	BV	BS	CE	CV	CS					
85	-	85.0	-	85.0	-	85.0	-	85.0	-	85.0	-	85.0	-
84	-	84.0	-	84.0	0.2	84.2	0.3	84.3	0.4	84.4	-	84.0	0.2
83	-	83.0	-	83.0	0.3	83.3	0.6	83.6	0.7	83.7	-	83.0	0.3
82	-	82.0	-	82.0	0.5	82.5	0.9	82.9	1.0	83.0	-	82.0	0.5
81	-	81.0	-	81.0	0.6	81.6	1.1	82.1	1.3	82.3	-	81.0	0.6
80	-	80.0	-	80.0	0.8	80.8	1.4	81.4	1.6	81.6	-	80.0	0.8
79	-	79.0	-	79.0	0.9	79.9	1.7	80.7	1.9	80.9	-	79.0	0.9
78	-	78.0	-	78.0	1.1	79.1	1.9	79.9	2.2	80.2	-	78.0	1.1
77	-	77.0	-	77.0	1.2	78.2	2.2	79.2	2.5	79.5	-	77.0	1.2
76	-	76.0	-	76.0	1.4	77.4	2.5	78.5	2.8	78.8	-	76.0	1.4
75	-	75.0	-	75.0	1.5	76.5	2.7	77.7	3.1	78.1	-	75.0	1.5
74	-	74.0	-	74.0	1.7	75.7	3.0	77.0	3.5	77.5	-	74.0	1.7
73	-	73.0	-	73.0	1.8	74.8	3.3	76.3	3.8	76.8	-	73.0	1.8
72	-	72.0	-	72.0	2.0	74.0	3.6	75.6	4.1	76.1	-	72.0	2.0
71	-	71.0	-	71.0	2.0	73.0	3.8	74.8	4.4	75.4	-	71.0	2.0
70	-	70.0	-	70.0	2.0	72.0	4.0	74.0	4.7	74.7	-	70.0	2.0
69	-	69.0	-	69.0	2.0	71.0	4.0	73.0	5.0	74.0	-	69.0	2.0
68	-	68.0	-	68.0	2.0	70.0	4.0	72.0	5.0	73.0	-	68.0	2.0

exaimpel: ün V tira cul C/D ün resultat da 77 puncts

>> $\text{suplemaint} = (85-77+1)*0.15 = 8*0.15 = 1.2$

resultat **78.2**

FS		Limite cat D: 62											
resultat	AV	AS	BE	BV	BS	CE	CV	CS					
72	-	72.0	-	72.0	-	72.0	-	72.0	-	72.0	-	72.0	-
71	-	71.0	-	71.0	0.2	71.2	0.3	71.3	0.4	71.4	-	71.0	0.2
70	-	70.0	-	70.0	0.4	70.4	0.6	70.6	0.8	70.8	-	70.0	0.4
69	-	69.0	-	69.0	0.6	69.6	0.9	69.9	1.2	70.2	-	69.0	0.6
68	-	68.0	-	68.0	0.7	68.7	1.2	69.2	1.6	69.6	-	68.0	0.7
67	-	67.0	-	67.0	0.9	67.9	1.5	68.5	1.9	68.9	-	67.0	0.9
66	-	66.0	-	66.0	1.1	67.1	1.8	67.8	2.3	68.3	-	66.0	1.1
65	-	65.0	-	65.0	1.2	66.2	2.1	67.1	2.7	67.7	-	65.0	1.2
64	-	64.0	-	64.0	1.4	65.4	2.4	66.4	3.1	67.1	-	64.0	1.4
63	-	63.0	-	63.0	1.6	64.6	2.7	65.7	3.5	66.5	-	63.0	1.6
62	-	62.0	-	62.0	1.7	63.7	2.9	64.9	3.8	65.8	-	62.0	1.7
61	-	61.0	-	61.0	1.9	62.9	3.2	64.2	4.2	65.2	-	61.0	1.9
60	-	60.0	-	60.0	2.0	62.0	3.5	63.5	4.6	64.6	-	60.0	2.0
59	-	59.0	-	59.0	2.0	61.0	3.8	62.8	5.0	64.0	-	59.0	2.0
58	-	58.0	-	58.0	2.0	60.0	4.0	62.0	5.4	63.4	-	58.0	2.0
57	-	57.0	-	57.0	2.0	59.0	4.0	61.0	5.7	62.7	-	57.0	2.0
56	-	56.0	-	56.0	2.0	58.0	4.0	60.0	6.0	62.0	-	56.0	2.0
55	-	55.0	-	55.0	2.0	57.0	4.0	59.0	6.0	61.0	-	55.0	2.0

exaimpel: ün E tira cul B ün resultat da 62 puncts

>> $\text{suplemaint} = (72-62+1)*0.17 = 11*0.17 = 1.87 = 1.9$

resultat **63.9**

8 x A10 Limite cat A: 72

resultat	AV		AS		BE		BV		BS		CE		CV		CS	
80	-	80.0	-	80.0	-	80.0	-	80.0	-	80.0	-	80.0	-	80.0	-	80.0
79	0.2	79.2	0.3	79.3	0.5	79.5	0.5	79.5	0.6	79.6	0.4	79.4	0.5	79.5	0.5	79.5
78	0.4	78.4	0.6	78.6	0.9	78.9	1.0	79.0	1.1	79.1	0.7	78.7	0.9	78.9	0.9	78.9
77	0.5	77.5	0.9	77.9	1.3	78.3	1.5	78.5	1.6	78.6	1.0	78.0	1.3	78.3	1.4	78.4
76	0.7	76.7	1.1	77.1	1.8	77.8	2.0	78.0	2.1	78.1	1.4	77.4	1.7	77.7	1.8	77.8
75	0.8	75.8	1.4	76.4	2.2	77.2	2.4	77.4	2.6	77.6	1.7	76.7	2.1	77.1	2.3	77.3
74	1.0	75.0	1.7	75.7	2.6	76.6	2.9	76.9	3.2	77.2	2.0	76.0	2.5	76.5	2.7	76.7
73	1.2	74.2	1.9	74.9	3.1	76.1	3.4	76.4	3.7	76.7	2.4	75.4	2.9	75.9	3.2	76.2
72	1.3	73.3	2.2	74.2	3.5	75.5	3.9	75.9	4.2	76.2	2.7	74.7	3.3	75.3	3.6	75.6
71	1.5	72.5	2.5	73.5	3.9	74.9	4.4	75.4	4.7	75.7	3.0	74.0	3.7	74.7	4.1	75.1
70	1.5	71.5	2.7	72.7	4.3	74.3	4.8	74.8	5.2	75.2	3.3	73.3	4.1	74.1	4.5	74.5
69	1.5	70.5	3.0	72.0	4.8	73.8	5.3	74.3	5.8	74.8	3.7	72.7	4.6	73.6	5.0	74.0
68	1.5	69.5	3.0	71.0	5.2	73.2	5.8	73.8	6.3	74.3	4.0	72.0	5.0	73.0	5.4	73.4
67	1.5	68.5	3.0	70.0	5.6	72.6	6.3	73.3	6.8	73.8	4.0	71.0	5.4	72.4	5.9	72.9
66	1.5	67.5	3.0	69.0	6.0	72.0	6.8	72.8	7.3	73.3	4.0	70.0	5.5	71.5	6.3	72.3
65	1.5	66.5	3.0	68.0	6.0	71.0	7.2	72.2	7.8	72.8	4.0	69.0	5.5	70.5	6.5	71.5
64	1.5	65.5	3.0	67.0	6.0	70.0	7.5	71.5	8.4	72.4	4.0	68.0	5.5	69.5	6.5	70.5
63	1.5	64.5	3.0	66.0	6.0	69.0	7.5	70.5	8.5	71.5	4.0	67.0	5.5	68.5	6.5	69.5
62	1.5	63.5	3.0	65.0	6.0	68.0	7.5	69.5	8.5	70.5	4.0	66.0	5.5	67.5	6.5	68.5
61	1.5	62.5	3.0	64.0	6.0	67.0	7.5	68.5	8.5	69.5	4.0	65.0	5.5	66.5	6.5	67.5

exemplu: în SV tira cul C/D în rezultat da 68 puncts

 >> $\text{suplemaint} = (80-68) \cdot 0.45 = 12 \cdot 0.45 = 5.4$
resultat 73.4
10 x A100 Limite cat A: 88

resultat	AV		AS		BE		BV		BS		CE		CV		CS	
100	-	100.0	-	100.0	-	100.0	-	100.0	-	100.0	-	100.0	-	100.0	-	100.0
99	0.2	99.2	0.3	99.3	0.5	99.5	0.5	99.5	0.5	99.5	0.3	99.3	0.4	99.4	0.4	99.4
98	0.3	98.3	0.5	98.5	0.9	98.9	1.0	99.0	1.0	99.0	0.6	98.6	0.8	98.8	0.8	98.8
97	0.5	97.5	0.8	97.8	1.3	98.3	1.5	98.5	1.5	98.5	0.9	97.9	1.2	98.2	1.2	98.2
96	0.6	96.6	1.0	97.0	1.8	97.8	2.0	98.0	2.0	98.0	1.2	97.2	1.5	97.5	1.6	97.6
95	0.7	95.7	1.3	96.3	2.2	97.2	2.4	97.4	2.5	97.5	1.5	96.5	1.9	96.9	2.0	97.0
94	0.9	94.9	1.5	95.5	2.6	96.6	2.9	96.9	3.0	97.0	1.8	95.8	2.3	96.3	2.4	96.4
93	1.0	94.0	1.8	94.8	3.1	96.1	3.4	96.4	3.5	96.5	2.1	95.1	2.6	95.6	2.8	95.8
92	1.2	93.2	2.0	94.0	3.5	95.5	3.9	95.9	4.0	96.0	2.4	94.4	3.0	95.0	3.2	95.2
91	1.3	92.3	2.3	93.3	3.9	94.9	4.4	95.4	4.5	95.5	2.7	93.7	3.4	94.4	3.6	94.6
90	1.4	91.4	2.5	92.5	4.3	94.3	4.8	94.8	5.0	95.0	2.9	92.9	3.7	93.7	4.0	94.0
89	1.6	90.6	2.8	91.8	4.8	93.8	5.3	94.3	5.5	94.5	3.2	92.2	4.1	93.1	4.4	93.4
88	1.7	89.7	3.0	91.0	5.2	93.2	5.8	93.8	6.0	94.0	3.5	91.5	4.5	92.5	4.8	92.8
87	1.9	88.9	3.3	90.3	5.6	92.6	6.3	93.3	6.5	93.5	3.8	90.8	4.9	91.9	5.2	92.2
86	2.0	88.0	3.5	89.5	6.1	92.1	6.8	92.8	7.0	93.0	4.1	90.1	5.2	91.2	5.6	91.6
85	2.0	87.0	3.8	88.8	6.5	91.5	7.2	92.2	7.5	92.5	4.4	89.4	5.6	90.6	6.0	91.0
84	2.0	86.0	4.0	88.0	6.9	90.9	7.7	91.7	8.0	92.0	4.7	88.7	6.0	90.0	6.4	90.4
83	2.0	85.0	4.0	87.0	7.4	90.4	8.2	91.2	8.5	91.5	5.0	88.0	6.3	89.3	6.8	89.8
82	2.0	84.0	4.0	86.0	7.8	89.8	8.7	90.7	9.0	91.0	5.0	87.0	6.7	88.7	7.2	89.2
81	2.0	83.0	4.0	85.0	8.2	89.2	9.2	90.2	9.5	90.5	5.0	86.0	7.0	88.0	7.6	88.6
80	2.0	82.0	4.0	84.0	8.6	88.6	9.6	89.6	10.0	90.0	5.0	85.0	7.0	87.0	8.0	88.0
79	2.0	81.0	4.0	83.0	9.0	88.0	10.1	89.1	10.5	89.5	5.0	84.0	7.0	86.0	8.0	87.0
78	2.0	80.0	4.0	82.0	9.0	87.0	10.6	88.6	11.0	89.0	5.0	83.0	7.0	85.0	8.0	86.0
77	2.0	79.0	4.0	81.0	9.0	86.0	11.0	88.0	11.5	88.5	5.0	82.0	7.0	84.0	8.0	85.0
76	2.0	78.0	4.0	80.0	9.0	85.0	11.0	87.0	12.0	88.0	5.0	81.0	7.0	83.0	8.0	84.0
75	2.0	77.0	4.0	79.0	9.0	84.0	11.0	86.0	12.0	87.0	5.0	80.0	7.0	82.0	8.0	83.0

exemplu: în V tira cul A în rezultat da 92 puncts

 >> $\text{suplemaint} = (100-92) \cdot 0.14 = 8 \cdot 0.14 = 1.12 = 1.2$
resultat 93.2

10 x A10 Limite cat A: 90

resultat	AV		AS		BE		BV		BS		CE		CV		CS	
100	-	100.0	-	100.0	-	100.0	-	100.0	-	100.0	-	100.0	-	100.0	-	100.0
99	0.2	99.2	0.3	99.3	0.5	99.5	0.6	99.6	0.6	99.6	0.4	99.4	0.5	99.5	0.5	99.5
98	0.4	98.4	0.6	98.6	1.0	99.0	1.1	99.1	1.1	99.1	0.8	98.8	0.9	98.9	1.0	99.0
97	0.6	97.6	0.9	97.9	1.5	98.5	1.6	98.6	1.7	98.7	1.2	98.2	1.4	98.4	1.5	98.5
96	0.7	96.7	1.2	97.2	1.9	97.9	2.1	98.1	2.2	98.2	1.6	97.6	1.8	97.8	1.9	97.9
95	0.9	95.9	1.5	96.5	2.4	97.4	2.6	97.6	2.8	97.8	1.9	96.9	2.2	97.2	2.4	97.4
94	1.1	95.1	1.8	95.8	2.9	96.9	3.2	97.2	3.3	97.3	2.3	96.3	2.7	96.7	2.9	96.9
93	1.2	94.2	2.1	95.1	3.3	96.3	3.7	96.7	3.9	96.9	2.7	95.7	3.1	96.1	3.3	96.3
92	1.4	93.4	2.4	94.4	3.8	95.8	4.2	96.2	4.4	96.4	3.1	95.1	3.6	95.6	3.8	95.8
91	1.6	92.6	2.7	93.7	4.3	95.3	4.7	95.7	5.0	96.0	3.5	94.5	4.0	95.0	4.3	95.3
90	1.7	91.7	2.9	92.9	4.7	94.7	5.2	95.2	5.5	95.5	3.8	93.8	4.4	94.4	4.7	94.7
89	1.9	90.9	3.2	92.2	5.2	94.2	5.8	94.8	6.1	95.1	4.2	93.2	4.9	93.9	5.2	94.2
88	2.0	90.0	3.5	91.5	5.7	93.7	6.3	94.3	6.6	94.6	4.6	92.6	5.3	93.3	5.7	93.7
87	2.0	89.0	3.8	90.8	6.2	93.2	6.8	93.8	7.2	94.2	5.0	92.0	5.8	92.8	6.2	93.2
86	2.0	88.0	4.0	90.0	6.6	92.6	7.3	93.3	7.7	93.7	5.4	91.4	6.2	92.2	6.6	92.6
85	2.0	87.0	4.0	89.0	7.1	92.1	7.8	92.8	8.3	93.3	5.7	90.7	6.6	91.6	7.1	92.1
84	2.0	86.0	4.0	88.0	7.6	91.6	8.4	92.4	8.8	92.8	6.0	90.0	7.1	91.1	7.6	91.6
83	2.0	85.0	4.0	87.0	8.0	91.0	8.9	91.9	9.4	92.4	6.0	89.0	7.5	90.5	8.0	91.0
82	2.0	84.0	4.0	86.0	8.5	90.5	9.4	91.4	9.9	91.9	6.0	88.0	8.0	90.0	8.5	90.5
81	2.0	83.0	4.0	85.0	9.0	90.0	9.9	90.9	10.5	91.5	6.0	87.0	8.0	89.0	9.0	90.0
80	2.0	82.0	4.0	84.0	9.0	89.0	10.4	90.4	11.0	91.0	6.0	86.0	8.0	88.0	9.0	89.0
79	2.0	81.0	4.0	83.0	9.0	88.0	11.0	90.0	11.6	90.6	6.0	85.0	8.0	87.0	9.0	88.0
78	2.0	80.0	4.0	82.0	9.0	87.0	11.0	89.0	12.0	90.0	6.0	84.0	8.0	86.0	9.0	87.0
77	2.0	79.0	4.0	81.0	9.0	86.0	11.0	88.0	12.0	89.0	6.0	83.0	8.0	85.0	9.0	86.0
76	2.0	78.0	4.0	80.0	9.0	85.0	11.0	87.0	12.0	88.0	6.0	82.0	8.0	84.0	9.0	85.0
75	2.0	77.0	4.0	79.0	9.0	84.0	11.0	86.0	12.0	87.0	6.0	81.0	8.0	83.0	9.0	84.0

exaimpel: în E tira cul C/D în rezultat da 92 puncts

 >> $\text{suplemaint} = (100-92)*0.16 = 8*0.38 = 3.04 = 3.1$

 rezultat **95.1**
püt GR Limite cat A: 54

resultat	AV		AS		BE		BV		BS		CE		CV		CS	
60	-	60.0	-	60.0	-	60.0	-	60.0	-	60.0	-	60.0	-	60.0	-	60.0
59	0.2	59.2	0.3	59.3	0.4	59.4	0.4	59.4	0.5	59.5	0.3	59.3	0.4	59.4	0.4	59.4
58	0.3	58.3	0.5	58.5	0.7	58.7	0.8	58.8	0.9	58.9	0.5	58.5	0.7	58.7	0.8	58.8
57	0.5	57.5	0.8	57.8	1.0	58.0	1.2	58.2	1.4	58.4	0.8	57.8	1.0	58.0	1.2	58.2
56	0.6	56.6	1.0	57.0	1.4	57.4	1.6	57.6	1.8	57.8	1.0	57.0	1.4	57.4	1.6	57.6
55	0.7	55.7	1.3	56.3	1.7	56.7	2.0	57.0	2.3	57.3	1.3	56.3	1.7	56.7	2.0	57.0
54	0.9	54.9	1.5	55.5	2.0	56.0	2.4	56.4	2.7	56.7	1.5	55.5	2.0	56.0	2.4	56.4
53	1.0	54.0	1.8	54.8	2.4	55.4	2.8	55.8	3.2	56.2	1.8	54.8	2.4	55.4	2.8	55.8
52	1.0	53.0	2.0	54.0	2.7	54.7	3.2	55.2	3.6	55.6	2.0	54.0	2.7	54.7	3.2	55.2
51	1.0	52.0	2.0	53.0	3.0	54.0	3.6	54.6	4.1	55.1	2.0	53.0	3.0	54.0	3.6	54.6
50	1.0	51.0	2.0	52.0	3.0	53.0	4.0	54.0	4.5	54.5	2.0	52.0	3.0	53.0	4.0	54.0
49	1.0	50.0	2.0	51.0	3.0	52.0	4.0	53.0	5.0	54.0	2.0	51.0	3.0	52.0	4.0	53.0
48	1.0	49.0	2.0	50.0	3.0	51.0	4.0	52.0	5.0	53.0	2.0	50.0	3.0	51.0	4.0	52.0
47	1.0	48.0	2.0	49.0	3.0	50.0	4.0	51.0	5.0	52.0	2.0	49.0	3.0	50.0	4.0	51.0

exaimpel: în V tira cul C/D în rezultat da 56 puncts

 >> $\text{suplemaint} = (60-56)*0.33 = 4*0.33 = 1.32 = 1.3$

 rezultat **57.4**

Cunguel glistas rangs dals ultims 4 ans

2012			Code	OP		85	TCH		72	Pard tr		80	Pard cr		100	Eng		100	S-ch		100	KK		100	GR		60	TotAlt	supl	TotNeu	Rneu	Ralt
Cramerì Marco	C/D	E	CE	81		81	70		70	74	2	76	92.2	2.3	94.5	93.0	2.1	95.1	89.3	3.2	92.5	96	1.6	97.6	60		60	655.5	11.2	666.7	1	1
Feuerstein Mario	A	E	AE	79		79	66		66	73		73	95.0		95	93.1		93.1	89.2		89.2	95		95	57		57	647.3	-	647.3	2	2
Palmisano Gian Luca	C/D	SV/JJ	CS	73	2.6	75.6	65	2.1	67.1	69	5	74	88.9	4.5	93.4	88.9	4.5	93.4	79.9	8	87.9	92	3.8	95.8	54	2.4	56.4	610.7	32.9	643.6	3	8
Sonder Gian Reto	C/D	E	CE	82		82	68		68	73	2.4	75.4	92.6	2.2	94.8	83.1	5	88.1	81.5	5	86.5	90	3.8	93.8	53	1.8	54.8	623.2	20.2	643.4	4	6
Rüegg Gian Carlo	C/D	E	CE	77		77	68		68	68	4	72	86.0	4.1	90.1	92.4	2.3	94.7	86.0	4.1	90.1	90	3.8	93.8	55	1.3	56.3	622.4	19.6	642.0	5	5
Brasi Bruno	A	E	AE	75		75	63		63	70		70	95.6		95.6	90.7		90.7	88.6		88.6	94		94	58		58	634.9	-	634.9	6	4
Steger Daniel	A	E	AE	72		72	58		58	76		76	94.4		94.4	95.2		95.2	88.4		88.4	94		94	56		56	634.0	-	634.0	7	3
Gotsch Peider	B	E	BE	71	2	73	65	1.2	66.2	65	6	71	79.5	8.9	88.4	86.4	5.9	92.3	83.1	7.3	90.4	89	5.2	94.2	55	1.7	56.7	594.0	38.2	632.2	8	10
Casty Remo	A	E	AE	73		73	59		59	73		73	94.3		94.3	93.5		93.5	85.1		85.1	94		94	56		56	627.9	-	627.9	9	7
Hosang Marina	C/D	E	CE	75		75	59		59	67	4	71	84.2	4.6	88.8	88.7	3.3	92	84.8	4.5	89.3	93	2.7	95.7	52	2	54	603.7	21.1	624.8	10	9
Stübi Martina	C/D	E	CE	71		71	51		51	67	4	71	80.6	5	85.6	81.8	5	86.8	72.4	5	77.4	79	6	85	48	2	50	550.8	27.0	577.8	11	11
Nuotclà Giovannin	C/D	SV/JJ	CS	64	3	67	40	4	44	60	6.5	66.5	81.2	7.6	88.8	70.5	8	78.5	73.3	8	81.3	93	3.3	96.3	42	4	46	524.0	44.4	568.4	12	12

2011			Code	OP		85	TCH		72	Pard tr		80	Pard cr		100	Eng		100	S-ch		100	KK		100	GR		60	TotAlt	supl	TotNeu	Rneu	Ralt
Cramerì Marco	C/D	E	CE	80		80	68		68	69	3.7	72.7	95.7	1.3	97	91.0	2.7	93.7	91.1	2.6	93.7	94	2.3	96.3	56	1	57	644.8	13.6	658.4	1	1
Sonder Gian Reto	C/D	E	CE	83		83	68		68	74	2	76	91.4	2.5	93.9	87.4	3.7	91.1	85.5	4.3	89.8	91	3.5	94.5	58	0.5	58.5	638.3	16.5	654.8	2	2
Rüegg Gian Carlo	C/D	E	CE	78		78	67		67	70	3.3	73.3	90.9	2.7	93.6	92.7	2.2	94.9	89.6	3.1	92.7	94	2.3	96.3	58	0.5	58.5	640.2	14.1	654.3	3	3
Steger Daniel	A	E	AE	81		81	63		63	78		78	94.4		94.4	94.5		94.5	87.2		87.2	94		94	57		57	649.1	-	649.1	4	4
Feuerstein Mario	A	E	AE	83		83	62		62	76		76	93.9		93.9	95.0		95	81.3		81.3	95		95	58		58	644.2	-	644.2	5	5
Jäger Jolanda	C/D	E	CE	77		77	65		65	75	1.7	76.7	87.7	3.6	91.3	89.3	3.2	92.5	83.6	4.8	88.4	92	3.1	95.1	57	0.8	57.8	626.6	17.2	643.8	6	6
Casty Remo	A	E	AE	75		75	58		58	72		72	94.9		94.9	93.4		93.4	71.1		71.1	96		96	56		56	616.4	-	616.4	7	7
Brasi Bruno	A	E	AE	71		71	62		62	70		70	91.7		91.7	90.4		90.4	84.5		84.5	87		87	55		55	611.6	-	611.6	8	8
Hosang Marina	C/D	E	CE	75		75	63		63	65	4	69	89.3	3.2	92.5	86.7	3.9	90.6	76.8	5	81.8	89	4.2	93.2	42	2	44	586.8	22.3	609.1	9	9
Stübi Martina	C/D	E	CE	77		77	58		58	68	4	72	80.6	5	85.6	79.1	5	84.1	84.0	4.7	88.7	88	4.6	92.6	48	2	50	582.7	25.3	608.0	10	11
Nuotclà Giovannin	C/D	SV/JJ	CS	74	2.4	76.4	53	4	57	65	6.5	71.5	78.5	8	86.5	84.1	6.4	90.5	75.8	8	83.8	75	9	84	51	3.6	54.6	556.4	47.9	604.3	11	10

2010			Code	OP		85	TCH		72	Pard tr		80	Pard cr		100	Eng		100	S-ch		100	KK		100	GR		60	TotAlt	supl	TotNeu	Rneu	Ralt
Sonder Gian Reto	C/D	E	CE	83		83	69		69	73	2.4	75.4	93.2	2	95.2	88.5	3.4	91.9	83.4	4.9	88.3	94	2.3	96.3	56	1	57	640.1	16.0	656.1	1	3
Feuerstein Mario	A	E	AE	81		81	64		64	76		76	94.0		94	93.0		93	91.6		91.6	95		95	57		57	651.6	-	651.6	2	2
Rüegg Gian Carlo	C/D	E	CE	77		77	67		67	72	2.7	74.7	92.1	2.3	94.4	92.1	2.3	94.4	85.6	4.2	89.8	91	3.5	94.5	54	1.5	55.5	630.8	16.5	647.3	3	4
Steger Daniel	A	E	AE	71		71	64		64	78		78	95.8		95.8	94.0		94	88.4		88.4	96		96	58		58	645.2	-	645.2	4	1
Casty Remo	A	E	AE	73		73	64		64	75		75	93.1		93.1	93.7		93.7	84.1		84.1	94		94	56		56	632.9	-	632.9	5	5
Cramerì Marco	C/D	E	CE	81		81	53		53	71	3	74	86.9	3.8	90.7	94.0	1.8	95.8	78.7	5	83.7	94	2.3	96.3	52	2	54	610.6	17.9	628.5	6	8
Gotsch Peider	B	E	BE	65	2	67	65	1.2	66.2	67	5.6	72.6	85.2	6.4	91.6	83.9	7	90.9	77.8	9	86.8	93	3.3	96.3	54	2	56	590.9	36.5	627.4	7	7
Brasi Bruno	A	E	AE	76		76	65		65	72		72	92.9		92.9	91.4		91.4	80.7		80.7	93		93	54		54	625.0	-	625.0	8	6
Nuotclà Giovannin	C/D	SV/JJ	CS	70	3	73	54	4	58	66	6.3	72.3	81.8	7.3	89.1	86.9	5.3	92.2	80.5	7.8	88.3	88	5.7	93.7	50	4	54	577.2	43.4	620.6	9	9
Palmisano Gianluca	C/D	SV/JJ	CS	71	3	74	53	4	57	62	6.5	68.5	80.5	7.8	88.3	84.9	6.1	91	71.1	8	79.1	82	8.5	90.5	50	4	54	554.5	47.9	602.4	10	10
Hosang Marina	C/D	E	CE	74		74	58		58	63	4	67	81.1	5	86.1	86.7	3.9	90.6	77.6	5	82.6	74	6	80	42	2	44	556.4	25.9	582.3	11	11
Stübi Martina	C/D	E	CE	78		78	57		57	56	4	60	78.4	5	83.4	84.8	4.5	89.3	68.6	5	73.6	65	6	71	43	2	45	530.8	26.5	557.3	12	12

2009			Code	OP		85	TCH		72	Pard tr		80	Pard cr		100	Eng		100	S-ch		100	KK		100	GR		60	TotAlt	supl	TotNeu	Rneu	Ralt
Cramerì Marco	C/D	E	CE	83		83	65		65	73	2.4	75.4	93.3	2	95.3	92.9	2.1	95	89.4	3.1	92.5	94	2.3	96.3	56	1	57	646.6	12.9	659.5	1	1
Rüegg Gian Carlo	C/D	E	CE	78		78	68		68	74	2	76	94.8	1.6	96.4	91.1	2.6	93.7	85.2	4.3	89.5	92	3.1	95.1	56	1	57	639.1	14.6	653.7	2	3
Feuerstein Mario	A	E	AE	77		77	68		68	75		75	94.3		94.3	93.8		93.8	91.3		91.3	95		95	58		58	652.4	-	652.4	3	2
Jäger Gion Otto	A	E	AE	83		83	65		65	79		79	91.0		91	91.9		91.9	87.5		87.5	94		94	57		57	648.4	-	648.4	4	5
Sprecher Jürg	C/D	V/J	CV	80	0.8	80.8	66	1.1	67.1	68	5	73	83.5	6.2	89.7	88.8	4.2	93	83.3	6.2	89.5	92	3.6	95.6	54	2	56	615.6	29.1	644.7	5	8
Sonder Gian Reto	C/D	E	CE	76		76	64		64	77	1	78	90.2	2.9	93.1	85.6	4.2	89.8	86.5	4	90.5	90	3.8	93.8	57	0.8	57.8	626.3	16.7	643.0	6	4
Gotsch Peider	B	E	BE	75	1.5	76.5	63	1.6	64.6	68	5.2	73.2	83.1	7.3	90.4	86.5	5.9	92.4	79.6	8.8	88.4	90	4.7	94.7	53	2.4	55.4	598.2	37.4	635.6	7	9
Plebani Peter	C/D	E	CE	78		78	63		63	72	2.7	74.7	84.3	4.6	88.9	89.1	3.2	92.3	80.2	5	85.2	92	3.1	95.1	54	1.5	55.5	612.6	20.1	632.7	8	11
Steger Daniel	A	E	AE	77		77	60		60	77		77	91.5		91.5	92.4		92.4	82.8		82.8	91		91	58		58	629.7	-	629.7	9	6
Casty Remo	A	E	AE	71		71	59		59	76		76	93.7		93.7	94.8		94.8	81.8		81.8	92		92	56		56	624.3	-	624.3	10	7
Brasi Bruno	A	E	AE	77		77	64		64	66		66	90.4		90.4	90.2		90.2	87.7		87.7	92		92	54		54	621.3	-	621.3	11	10
Nuotclà Giovannin	C/D	SV/JJ	CS	76	1.9	77.9	53	4	57	62	6.5	68.5	82.2	7.2	89.4	84.8	6.1	90.9	79.2	8	87.2	81	9	90	50	4	54	568.2	46.7	614.9	12	12

megliders resultats

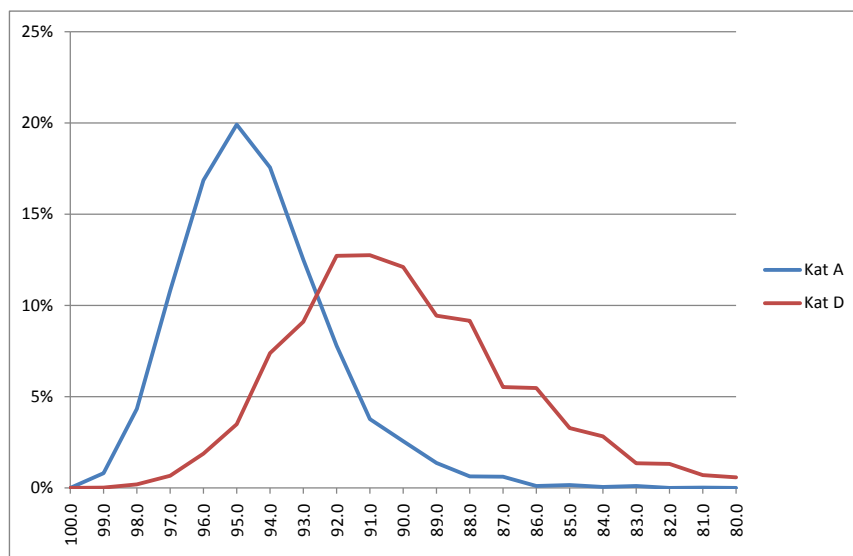
tuot ils megliders resultats					83		70		79			97			95.8		</
------------------------------	--	--	--	--	----	--	----	--	----	--	--	----	--	--	------	--	----

cunguel da las 2 propostas cun l'exaimpel da 10 x A10

Datas da basa: tuot ils resultats da la prüm runda principala dal las GM CH dals ans 2010 - 2012

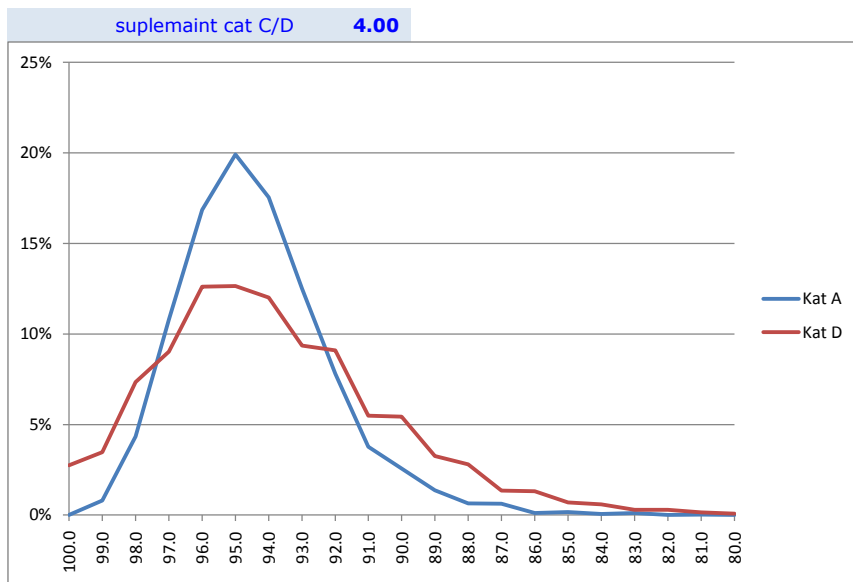
resultats effectivs

10xA10	Kat A	Kat D	
100.0	0%	0.3	0%
99.0	0.8%	3	0.0%
98.0	4.3%	17	0.2%
97.0	10.8%	61	0.7%
96.0	16.9%	173	1.9%
95.0	19.9%	322	3.5%
94.0	17.6%	681	7.4%
93.0	12.5%	838	9.1%
92.0	7.8%	1'170	12.7%
91.0	3.8%	1'173	12.7%
90.0	2.6%	1'114	12.1%
89.0	1.4%	869	9.4%
88.0	0.6%	843	9.2%
87.0	0.6%	509	5.5%
86.0	0.1%	504	5.5%
85.0	0.2%	302	3.3%
84.0	0.1%	260	2.8%
83.0	0.1%	125	1.4%
82.0	0.0%	122	1.3%
81.0	0.0%	65	0.7%
80.0	0.0%	54	0.6%
100%		9'205	100%
94.383			89.983



resultats cun suplemaint tenor proposta 1

10xA10	Kat A	Kat D	
100.0	0%	254	3%
99.0	0.8%	322	3.5%
98.0	4.3%	681	7.3%
97.0	10.8%	838	9.0%
96.0	16.9%	1'170	12.6%
95.0	19.9%	1'173	12.6%
94.0	17.6%	1'114	12.0%
93.0	12.5%	869	9.4%
92.0	7.8%	843	9.1%
91.0	3.8%	509	5.5%
90.0	2.6%	504	5.4%
89.0	1.4%	302	3.3%
88.0	0.6%	260	2.8%
87.0	0.6%	125	1.3%
86.0	0.1%	122	1.3%
85.0	0.2%	65	0.7%
84.0	0.1%	54	0.6%
83.0	0.1%	27	0.3%
82.0	0.0%	27	0.3%
81.0	0.0%	13	0.1%
80.0	0.0%	7	0.1%
100%		9'280	100%
94.383			93.876



resultats cun suplemaint tenor proposta 2

10xA10	Kat A	Kat D	
100.0	0%	4	0%
99.0	0.8%	31	0.3%
98.0	4.3%	346	3.7%
97.0	10.8%	734	7.9%
96.0	16.9%	1'307	14.1%
95.0	19.9%	1'986	21.4%
94.0	17.6%	1'802	19.4%
93.0	12.5%	1'344	14.5%
92.0	7.8%	638	6.9%
91.0	3.8%	453	4.9%
90.0	2.6%	261	2.8%
89.0	1.4%	86	0.9%
88.0	0.6%	126	1.4%
87.0	0.6%	49	0.5%
86.0	0.1%	54	0.6%
85.0	0.2%	17	0.2%
84.0	0.1%	32	0.3%
83.0	0.1%	4	0.0%
82.0	0.0%	9	0.1%
81.0	0.0%	-	0.0%
80.0	0.0%	-	0.0%
100%		9'283	100%
94.383			94.081

